

# **Assessments for Online Learning Environments**

Designing for Homeostasis in Education



WHY?



WHAT?

# Experiential Learning

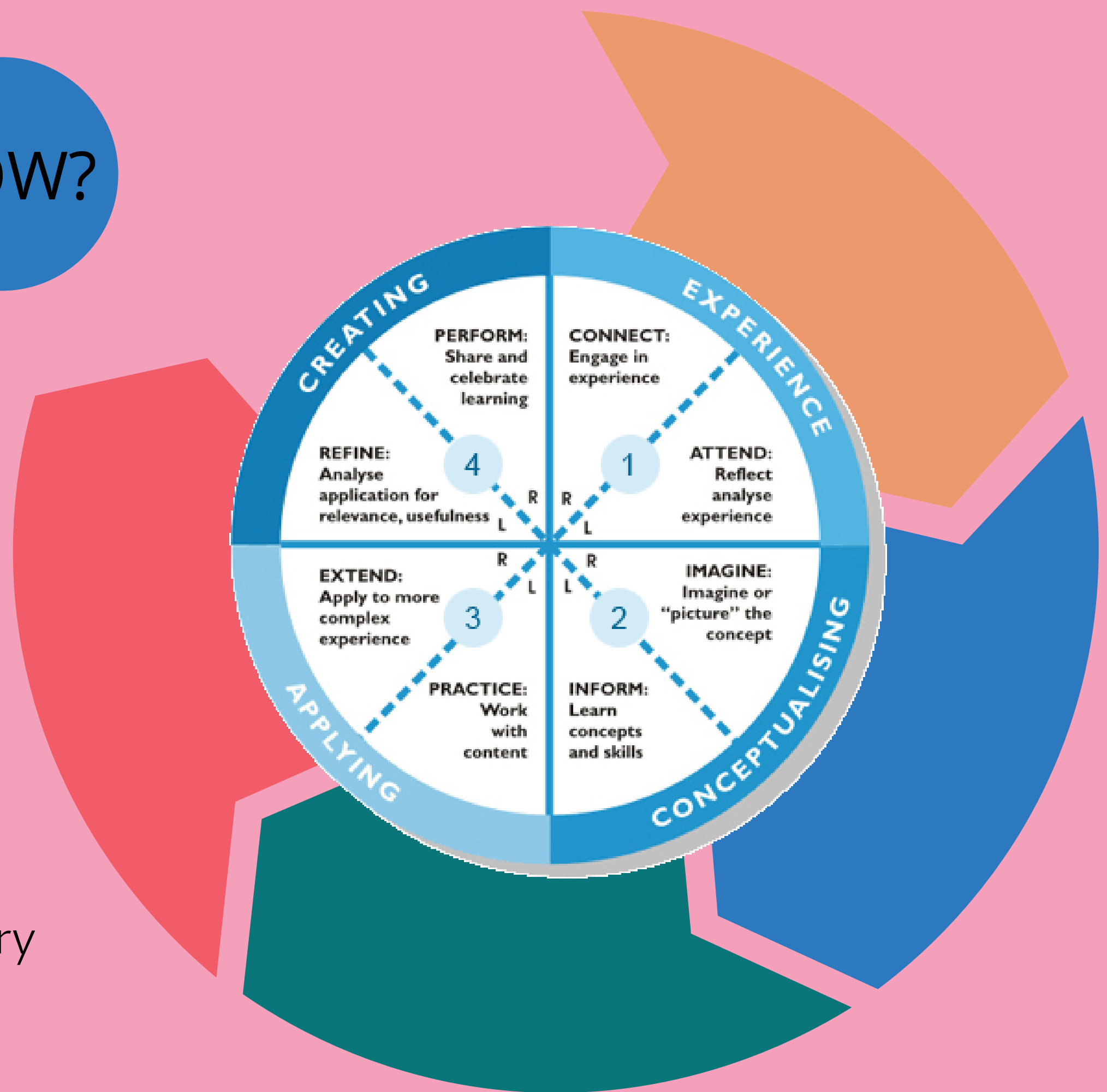
An intersectional relationship between learner, educator, content, and framework

# 4MAT

HOW?

## Learning Styles

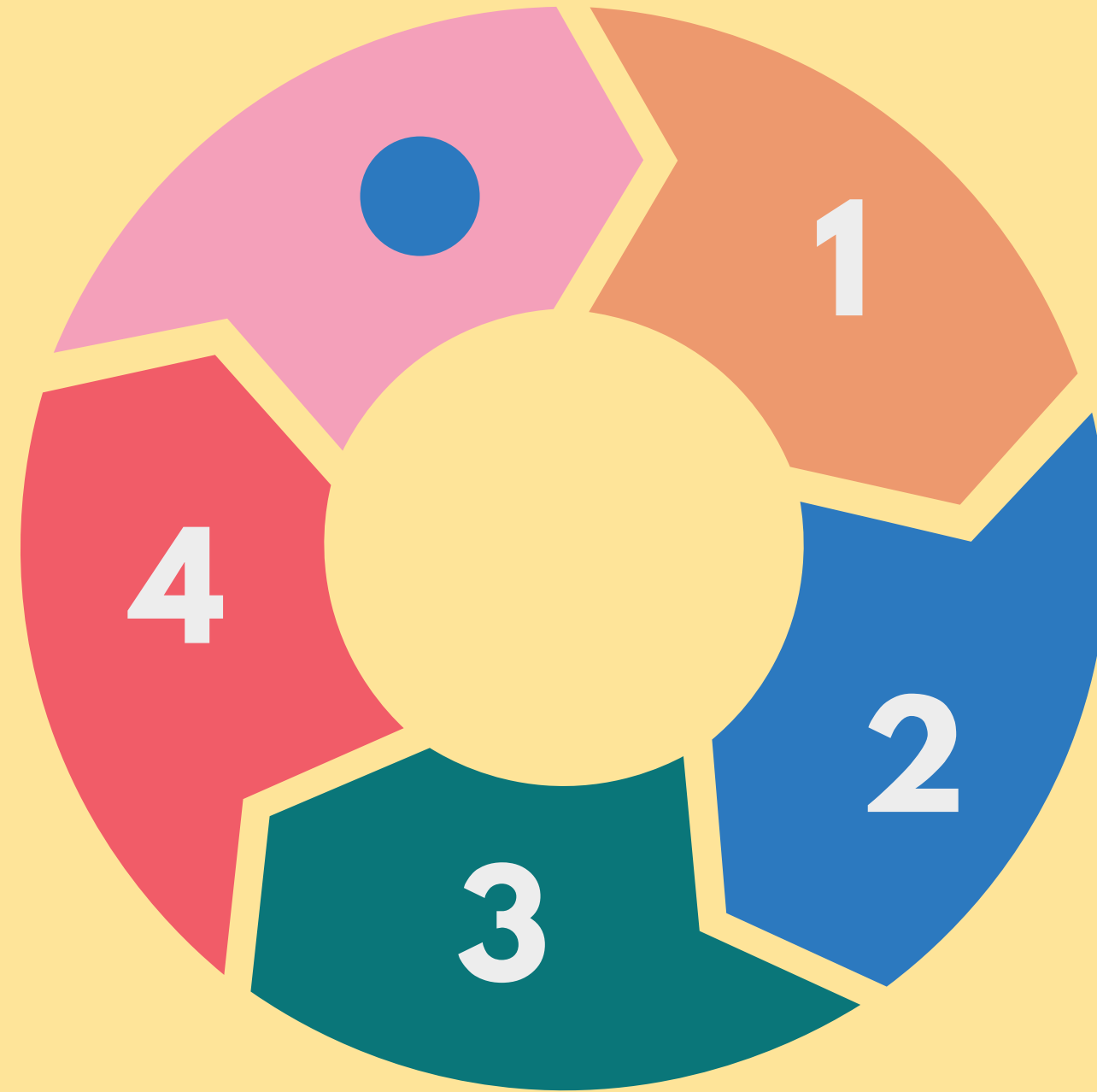
- Type 1: Meaning and Connection
- Type 2: Concepts and Consistency
- Type 3: Skills and Practicality
- Type 4: Adaptation and Self Discovery



# Assessing the Learning Environment

Calibrate  
Assess  
Recalibrate

Learners



Facilitators

Administration

Institutional  
Standards / Framework

# Assessing the Learning Environment:

## Hospitality Industry Education

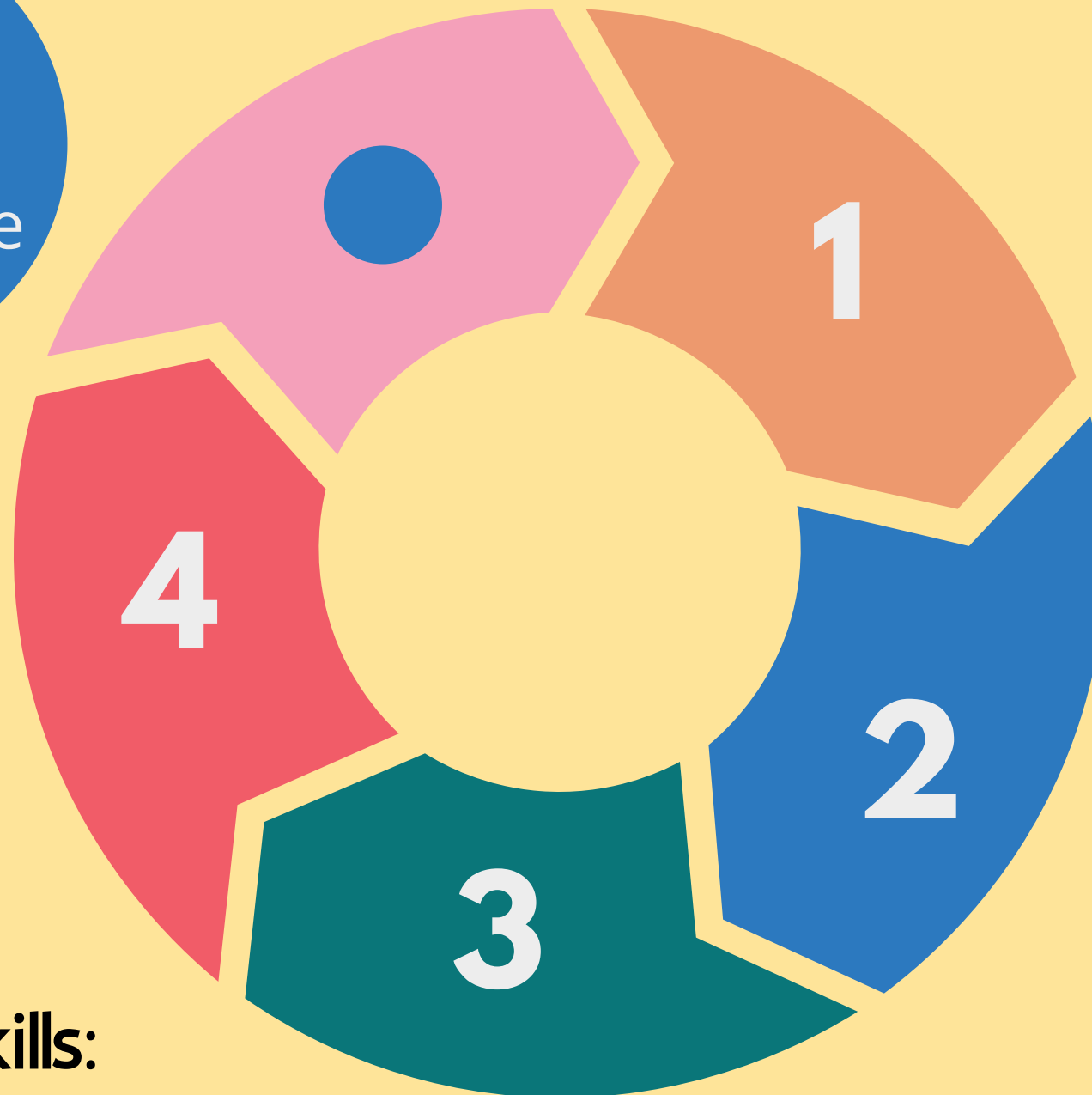
Calibrate  
Assess  
Recalibrate

### Evaluate Independence & Self Discovery:

Communications  
Personalized Care  
Performance

### Evaluate Skills:

Booking Opportunities  
Skill improvement  
Continuing Education



### Evaluate Connection:

Guest experience  
Student experience  
Educator experience

### Evaluate Data:

Client Retention  
Student Testing / Grades  
Facilitation Evaluation



**Engaging:**

**captivating**

**appealing**

**pleasing**

**attractive**





# The learning process as the assessment framework

**Melinda Cadwallader**